

# New 2017 Supplement!



## HARRIS 2017 SUPP

AVAILABLE IN FEBRUARY

ZHEU06S17	Liberty	9.95	7.96
ZHEU67S17	PI Blk	8.95	7.16
ZHEC03S17	Canada	9.95	7.96

AVAILABLE IN JUNE

ZHEU04S17	Liberty Vol #2	12.95	10.36
ZHEW04S17	World	19.95	15.96

## MINKUS 2017 SUPP

AVAILABLE JANUARY THRU MARCH

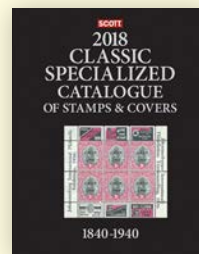
ZMKU54S17	All American Pt 1	22.99	18.39
ZMKU91S17	A/A #6 PNC	11.99	9.59
ZMKU52S17	Plate No Coils	11.99	9.59
ZMKU07S17	US Comm	16.99	13.59
ZMKU43S17	US Reg	16.99	13.59
ZMKU55S17	A/A #3 UN	25.99	20.79
ZMK04S17	UN Sing	25.99	20.49
ZMK79S17	UN Postal Stat	11.99	9.59

## SCOTT 2017 SUPP

AVAILABLE NOW

ZSCU06S14	National	22.99	18.39
ZSCU58S14	Minuteman	22.99	18.39
ZSCU51S14	US PNC Sin	19.99	15.99
ZSCU52S14	US Comp PNC	19.99	15.99
ZSCU53S14	US PNC Simp	11.99	9.59
ZSCU07S17	US Comm Sing	16.99	13.59
ZSCU43S17	US Reg	16.99	13.59
ZSCU60S17	American	34.99	27.99
ZSCU59S17	Minuteman UN	25.99	25.99
ZSCU65S17	Pony Express	22.99	18.39
ZSC04S17	UN Sing & Post Stat	25.99	20.79
ZSCU24S17	UN Imp Block	19.99	15.99

## Scott 2018 Classic Specialized Catalog 1840-1940



The Scott Classic Specialized Catalogue of Stamps and Covers 1840-1940 PLUS British Empire thru George VI, 1953, is the primary source for the issues of the first century of philately. Expanded listings ranging from color varieties to paper varieties to individual never-hinged issues are included in the Scott Classic Specialized Catalogue of Stamps and Covers 1840-1940. The Scott Classic Specialized catalogue is also a major source for listings and values for covers, multiples (including strips and blocks of four) for select countries, stamps without gum as well as used pairs.

**RSCC188**

174.99 **139.99**

America's (and the World's) Largest Stamp Collecting Supply Company



### SHIPPING CHARGES

By MAIL/UPS \*: \$7.50 Min. Orders over \$54 ADD 12%,  
Over \$100 ADD 10%, Over \$250 ADD 8%

\* Some Remote Areas Carry Higher Shipping charges.

PA Residents: ADD 6% Sales Tax

ADD \$5/\$10 Per Parcel on high weight/low cost orders shipped to the 11 Western States & TX

Ask for Shipping Charges to AK, HI, P.R., APO's, FPO's, Foreign

Phone: 1-800-221-9960 Fax: 1-888-221-9960

Email: custserv@subwaystamp.com Phone: 814-946-1000 Fax: 814-946-9997



2121 Beale Ave, Altoona, Pa 16601 - DEPT. U

[www.subwaystamp.com/](http://www.subwaystamp.com/)

Prices subject to change without notice  
Not Responsible For Typographical Errors