

# One of A Kind U.S. Singles & Plate Blocks Sale!

This is an example of our Special Offers Stamp Sale Lists. Lots sell fast, so phone (603-424-7556) or email (jd@stampnewsnow.com) orders are suggested. Even if you do not find anything in this list, let us know if you want future lists sent by email or by standard mail. Likewise, if there are particular items you seek, let us know and we will search our stock for you.

## U.S. Used Singles



9 FVF, moderate cancel  
SCV \$100, net \$49



17, VF-XF, Fresh, Moderate ccl,  
3 wide margins, Clear all sides,  
VF-XF SV \$325, net \$175



24, VF with \$12.50 Scott premium  
for N.Y. Carrier ccl.  
SCV \$50 net \$27.50



63 Used, Fine+ with great  
red NY Carrier ccl  
SCV \$80, net \$39



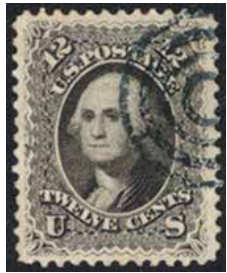
63 Used, Fine+ light ccl  
SCV \$45, net \$22



63 Used, FVF grid ccl,  
light corner crease  
SCV \$45, net \$8



69 Used, XF, light target  
cancel, Nice clean back  
SCV \$95, XF SCV \$325  
net \$225



69, VF, Neat Target ccl, Fresh  
SCV \$95, net \$65



72 Used, Fine, light cancel,  
100% Sound  
SCV \$575, net \$135



73 Used, Fine, Fancy Red  
Paint premium cancel,  
SCV \$115, net \$45



91 Fine, clear of perfs (better  
than most) light cancel, nice  
clear grills  
SCV \$575, net \$170



97 Just Fine, 1868 "F" points  
show, Sharp. Blue very light ccl  
SCV \$260, net \$95



160 VF, Neat town cancel  
SCV \$85, net \$42.50



233, XF-Sup, neat c.d.s.  
XF-Sup SCV \$200, net \$49



260, FVF, Brought & Fresh, Light  
Cancel, SCV \$140, net \$75



307, XF, Moderate ccl, Portrait  
Shows, XF SCV \$55, net \$19.



K1 XF-Superb, light ccl,  
XF-S SCV \$425, net \$195



240, VF-XF, moderate ccl, VF SCV \$200  
VF-XF SCV \$300, net \$160



285, Superb, Neat Dbl Oval ccl, Parts of  
Watermarks in All Four Corners!  
Superb SCV \$900, XF SCV \$75, net \$39



299 FVF, light ccl, fresh  
SCV \$30, net \$6.95



399, XF-Superb, Light Grid of Dots ccl,  
XF-S \$180, net \$69

Minimum order \$15. Under \$40 add \$4 for insurance or assume risk. U.S. orders only. Send order & payment to

### STAMP NEWS SALES

42 Sentry Way, Merrimack, NH 03054

Credit cards: phone 603-424-7556

or email [jd@StampNewsNow.com](mailto:jd@StampNewsNow.com)







390-396 Used, Very Fine, Nice, Balanced Set, Better Than Most  
SCV \$354, net \$145



E2 FVF, straight line ccl, bright & fresh  
SCV \$45, net \$19.50



E4 FVF, light ccl, SCV \$110, net \$39



PR123 1896 \$20 Periodical issue with great St. Louis oval cancel. Only in use till 1898, not necessarily a *Mekeel's* usage, but this was during the period when *Mekeel's Weekly* was based in and mailing from St. Louis.  
SCV \$200, net \$85



PR120 1896 \$2 Periodical issue with great St. Louis oval cancel. Only in use till 1898, not necessarily a *Mekeel's* usage, but this was during the period when *Mekeel's Weekly* was based in and mailing from St. Louis.  
SCV \$110, net \$65



U351 10¢ Columbian Envelope Entire used to Germany, Dec. 10, 1894, with New York transit and Germany receiver on back, a nice companion to a Columbian stamp collection, neatly slit open at top. SCV \$75, net \$30



C18 VF+ Plate # single, light cancel  
SCV \$47.50+, net \$42

# U.S. Mint



234 VF-XF VVLH, VF-XF SCV \$72.50, net \$42.50



234 Fine NH, SCV \$150.00, net \$49



238 VF NH  
SCV \$600, net \$295



238 FVF LH  
SCV \$200, net \$125



288 VF LH, SCV \$100, net \$59



297 FVF NH  
SCV \$180, net \$95



299 FVF NH  
SCV \$325, net \$135



302 XF NH  
Bright, fresh & sharp  
XF SCV \$375, net \$175



303 XF-Superb LH Beauty  
XF-S SCV \$150, net \$95



304 FVF LH  
SCV \$60, net \$39



308 XF LH  
XF SCV \$70, net \$59



301 Fine NH Plate # Strip,  
Immaculate gum, strong perfs  
SCV \$120, Net \$60





319 FVF NH, Imprint & Plate # Strip, Rich Color, Immaculate gum, Scott \$55, net \$39



369 XF-S, Very LH  
Bluish paper, rare this nice  
XF-S SCV \$275, net \$225



339 XF LH  
XF SCV \$60, net \$41



398 Superb Centering, pulled perf  
SCV \$16, Superb SCV \$525, net \$12



399 Superb LH,  
Superb SCV \$325, net \$125



464 XF-Superb NH,  
Immaculate Gum  
XF-S SCV \$1,100, net \$275



509 VF NH, SCV \$25, net \$19



516 FVF NH  
SCV \$70, net \$35  
Also available, LH \$17.50



511 VF NH,  
SCV \$17, net \$15



514 VF-XF NH, wide margins  
VF-XF SCV \$105, net \$85



515 Superb LH  
Superb SCV \$245  
(XF-S \$130), net \$95



367-68, 370-73 (no 369 Bluish paper), FVF-VF NH, Nice, clean, fresh set (example) SCV \$139, net \$79



368 Scarce Combination Block: Left block 3mm spacing, right block 2mm spacing  
VF NH Light natural gum skips, less than usual; SCV \$230, net \$125



411 VF NH Line Pr, SCV  
\$125, net \$69



442 VF-XF NH, SCV \$55,  
VF-XF SCV \$75, net \$49



497 FVF NH Pair, Deep Rich Color. SCV \$85, net \$39



# U.S. Mint



518 VF-XF NH, immaculate gum, full perfs all around, with PSE Certificate grading it VF-XF 85 NH. VF-XF SCV \$110, net \$90



549 XF-Superb NH, Jumbo margins XF SCV \$175+, net \$125



550 XF NH, Wide Margins XF SCV \$170, net \$125



534 XF NH Block, Immaculate gum, strong color, Clear Type Va Identification characteristics XF SCV \$160, net \$120 (Pairs \$70)



555 FVF NH SCV \$27.50, net \$12.50



557 VF NH, wide margins SCV \$35+, net \$24



559 XF+ NH, wide margins, XF SCV \$45+, net \$36



571 XF NH XF SCV \$130, net \$95



572 FVF+ NH SCV \$120, net \$69



616 XF NH, light natural gum wrinkle XF SCV \$79, net \$28



C6 FVF NH SCV \$130, net \$72.50



E13 XF NH, XF NH SCV \$115, net \$85



611 Superb NH Jumbo Margins, SCV \$130+++ (\$758 based pm Singles SCV), net \$60



RW6 VF NH Wide Top Plate # Single SCV \$250+, net \$140.



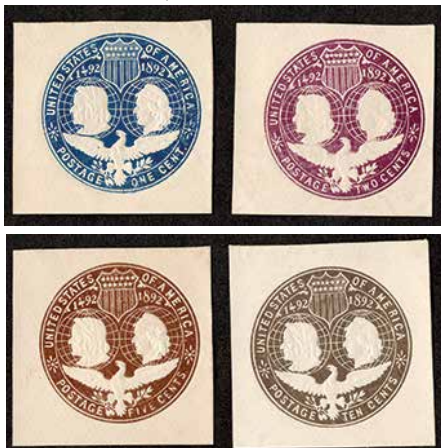
RW16 VF NH, SCV \$70, net \$45



K1 VF NH SCV \$67.50, net \$52.50



631 VF NH Cross Gutter Block, VF NH, with Gum Ridges, per Scott Standard, SCV \$35, net \$31



Mint Columbian Cut Squares Set, Sc. U348-51  
Nice clean 1893 Columbian Issue, a FVF set, better than most, an affordable companion to the Columbian stamp issues, all released for the Columbian Exposition. SCV \$35, net \$22.50



K13 FVF LH SCV \$129, net \$74



**This Page Only: Take 10% Off These Prices While Supply Lasts—Most Are One Of A Kind Lots**



632-642 FVF NH, SCV \$28, net \$18



692-701 FVF NH, Fresh, clean set, SCV \$137.25, net \$75  
Also available, 692-700, SCV \$87.25, net \$35



669-79 FVF NH Set, better than most, SCV \$530.50, net \$295



757, 2¢ Farley Park Issue, sold with no gum, then USPO offered to apply gum. I have a few NH examples that can serve as reference copies. While SCV is \$1.75, just try to find them outside of \$114 SCV 756-65 sets.

Buy a set of 756-65 Parks Imperfs, no gum as issued, SCV \$15.50, for \$9.50 and you can add \$2 for a P.O. applied NH original gum single; Or an O.G. NH single alone for \$5

Limit one single as I want to get the few I have into as many collections as possible



669-79 FVF LH Set, better than most, SCV \$265.25, net \$145



833 VF NH, SCV 16, left or center stamps @ \$12 (right stamp corner crease, net \$3)



847 FVF NH Line Pair, scv \$42.50, net \$19



LO2 General Issue Carrier VF NH Line Pair Beauty, No gum SCV \$110; RARE NH, so NH conservative estimate c. \$220, net \$145



O15, FVF NH, SCV \$170, gum skips so priced as LH, SCV \$75, net \$39



O16, FVF O.G., hinge remnants as often, blunt perfs, SCV \$70, net \$19



RW58, VF NH, SCV \$30 net \$19.50



RW59, XF NH, XF NH SCV \$37.50 net \$25



RW60, XF-S NH, XF-S NH SCV \$55, net \$35



# U.S. Plate Blocks



620 Plate Block, FVF NH, Bright & Fresh, Better than Most  
SCV \$275, net \$135



550 Plate Block, FVF VVLH in selvedge, margin perf sep  
SCV \$425, net \$125



701 Plate Block, Fine-Very Fine, Never Hinged,  
Full, intact perfs all around, bright color  
SCV \$230, net \$155



646 Plate Block, FVF NH, Immaculate gum,  
Light erasure in margin, SCV \$52.50, net \$19



629 Plate Block, FVF NH, SCV \$50, net \$42.50



752 Plate Block, excellent centering as many have perfs  
cutting design, immaculate reverse, Never Hinged, no gum  
as issued with no signs of prior hinging.  
SCV \$27.50++, net \$29



725 Plate Block, FVF+ NH, SCV (undervalued) \$20, net \$20



654 Plate Block, FVF+ NH, SCV \$40, net \$34



771 FVF NH No Gum As Issued, No Hinge Marks or Wrinkles SCV \$55, net \$32



1053 Plate Block, FVF NH, SCV \$210, net \$135



893 FVF NH, Net \$24  
(sample photo)  
Also available, complete  
set, FVF NH, \$89



# U.S. Plate Blocks



685, FVF NH, SCV \$20, net \$15.00



696, VF NH, SCV \$55+, net \$45.00



696, FVF NH, SCV \$55, net \$40.00



718-719 FVF NH,  
SCV \$42, net \$32



643 Wide Top Plate Block, FVF NH  
SCV \$45.00, net \$19



733, FVF NH, wide top, SCV \$15+, net \$12.50



753, VF, No Gum As Issued, No Hinge  
Marks, huge bottom selvage,  
SCV \$15+, net \$15.



724 Wide Top Plate Block, FVF NH  
SCV \$12.50+, net \$11



734 Wide Top Plate Block, VF NH  
SCV \$28+, net \$22



906, VF NH, SCV \$22 (undervalued), net \$18.50.



4740 FVF NH PB of 4  
SCV \$9, net 7.50  
Also available, PB of 8  
with Top Label,  
SCV \$18, net \$15



1295 Plate Block, FVF NH, Fresh  
SCV \$42.50, net \$24



C25-C31 FVF NH set, SCV \$81.20, net \$39.50  
Also available, C31 alone, SCV \$47.50, net \$26



# Proofs



63P4 XF LH, no gum as issued,  
Stamp SCV \$650,  
Proof SCV \$50+, net \$59



121P4 VF LH SCV \$170  
Stamp SCV \$4,000, net \$120



240P4 VF, No Gum As Issued, LH  
Proof SCV \$200. O.G. Stamp SCV \$400, net \$90



071P4, VF, hinge remnant  
Stamp Value \$2,500 net \$65



PR32P4, VF LH  
Stamp Value \$6,500 net \$36

# Plate Blocks



704-715 Plate Blockset, Fine-Very Fine, Never Hinged, much better than most  
Bright & fresh, full perfs all around, nice balanced set.  
SCV \$391, net \$225

# Proofs



A Very Fine set of the 1891 Small Bank Note Design Types Proofs,  
Sc. 219P4//229P4 (the 2¢ is the Lake 219DP4) in Rare Condition, NH, Some LH.  
SCV as Proofs is \$585, the Stamp Set SCV is \$1,400 without XF premiums.  
Net for this Premium Condition Proof Set is \$495.