

## Viewing Collections:

# Viewing the Grahway Australian States

by John F. Dunn

On October 23 Daniel F. Kelleher Auctions conducted the sale of the The Grahway Collection of Australia and States and New Zealand and Dependencies. In this viewing we will focus on the Australia States sections, keeping comments to a minimum in order to fit in as wide a representation of lots as possible.

The auction opened with New South Wales, one of the first lots being this 1850 Sydney View 1d dull carmine, plate I re-engraved, bluish paper (Sc. 2c) unused without gum, and with large margins, but two pressed creases. With an SCV of \$5,000, a Gibbons (#11) value of \$10,080 (converted from £), and a pre-sale estimate of \$3,000-4,000, it realized \$4,720. (All prices do not include the 18% Buyer's Premium that is added on to these hammer prices.)



To show the differences resulting from these long printings and the plate wear, to the left we show an 1850 Sydney View 2d grayish blue plate I intermediate impression (Sc. 3d, \$8,000), estimate



\$1,000-1,500, hammer \$1,534; and to the right an 1850 Sydney View 2d dull blue plate II worn impression (Sc. 5; \$1,65), estimate \$150-200, hammer \$130.



New South Wales Queen Victoria issues include, left, an 1854 Queen Victoria 2d Prussian blue watermarked "2" unused without gum (Sc. 24b; \$400), estimate \$250-



350, hammer \$354; right, an 1864 QV 6d purple perf 13 (Sc. 40, \$325), estimate \$150-200, did not sell.



Next we view an 1865 QV 2d die proof in pale blue on glazed card (Sc. 46 var.), estimate \$400-600, hammer \$266; and overlapping that an 1886 Queen Victoria £1 "POSTAGE" perf 12 overprinted "SPECIMEN" (Sc. 72 var.) estimate \$400-600, hammer \$236.



Then, at the top of the next column is an 1885 Queen Victoria 5s "POSTAGE" perf 12 x 10, overprinted "REPRINT" top sheet margin block of 4 (Sc. 74 variety), o.g., never hinged, estimate \$400-600, hammer \$354.



Below is an eye-catching 1897 Queen Victoria Jubilee 1d die I, 2d & 2-1/2d die I compound die proof in deep ultramarine on thin glazed card (Sc. 98a//100a vars.); minor flaws, estimate \$400-600, hammer \$236.



And for a closer look, here's the 1897 QV 2-1/2d die I die in dark blue proof on glazed card (Sc. 100a var.) reduced to 45x38mm, estimate \$200-300, which did not sell.



Completing the NSW section is an 1899 QV 2d cobalt blue imperforate pair watermarked Large Crown and NSW (2mm spacing) (Sc. 103a), very lightly hinged o.g., SCV \$325, estimate \$300-400, went unsold;



and the 1890 Official overprint on the 1880 9d on 10d brown, this being the 1895 Special Printing (Sc. O39 var.) watermarked Small Crown & NSW canceled to order "N.S.W." in ovals, but the cancel was subsequently repainted. 1000 were prepared for collector sets, 900 of which were canceled "N.S.W." in ovals, but it is believed that only 158 were sold and that the rest were destroyed. With an estimate of \$400-600, it did not sell.



We now come to Queensland and (left) the 1860 Queen Victoria "Chalon Head" 1d carmine rose, imperf, Large Star watermark (Sc. 1; \$1,050), estimate \$300-400, hammer \$443; and (right) the 1883 Queen Victoria "Chalon Head" £1 deep green Large Crown and Q watermark, o.g. (Sc. 83; \$425), estimate \$200-300, did not sell.



On page 35 we see a fine example of the Queensland Postal-Fiscal 1871-72 2s blue perf 13 (Sc. AR37; \$140) unwatermarked, o.g.,



lightly hinged, estimate \$200-300, hammer \$142; and at right, a Stamp Duty 1892 Queen Victoria 5s plate proof in black on thin card (SG Design F5), estimate \$100-150, hammer \$266.



To the left is the 1855 "Van Dieman's Land" 4d deep blue imperf Large Star watermark (Sc. 6; \$3,250), unused without gum, thinned at top, estimate \$1,500-2,000, unsold; and to the right the 1858 Queen Victoria "Chalon Head" 1s vermilion imperf Double-lined Numeral watermark (Sc. 16; \$675), unused without gum, estimate \$400-600, also went unsold.



Moving on to South Australia, we view an 1855 Queen Victoria (London Print) 2d rose carmine imperf Large Star watermark unused without gum (Sc. 2; \$750), estimate \$750-1,000, hammer \$826; and an 1867 QV 1d pale



Completing our Tasmania viewing we have at left the 1897 QV £1 green & yellow overprinted "SPECIMEN" (Sc. 85 var.), o.g., never hinged, estimate \$250-350, hammer \$189; at the right, the Postal-Fiscal 1863 St. George and the Dragon 2s6d



Fiscal 1863 St. George and the Dragon 2s6d carmine perf 12 (Sc. AR11; \$500), o.g., estimate \$200-300, did not sell; and back to the left, the Postal-Fiscal 1900 Platypus 1d blue "REVENUE" overprint inverted (Sc. AR28 var.), o.g., NH, estimate \$200-300, hammer \$142.

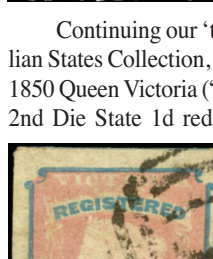
bright green perf 11-1/2-12-1/2 x roulette Large Star watermark, with small part o.g. (Sc. 29b; \$300), estimate \$250-350, hammer \$295.



Also, to the left is an 1886 QV "Postage & Revenue" high value £2 Venetian red, perf 10 (Sc. 86a; \$525) canceled Wallaroo circular datestamp 7 Jan 1896; upper left corner repaired, estimate \$250-350, hammer \$354; and at right, a 1908 QV (thick "POSTAGE") 10s green Crown and SA



(close) watermark (Sc. 142B; \$260) with a light central strike Adelaide circular datestamp, estimate \$100-150, hammer \$177.



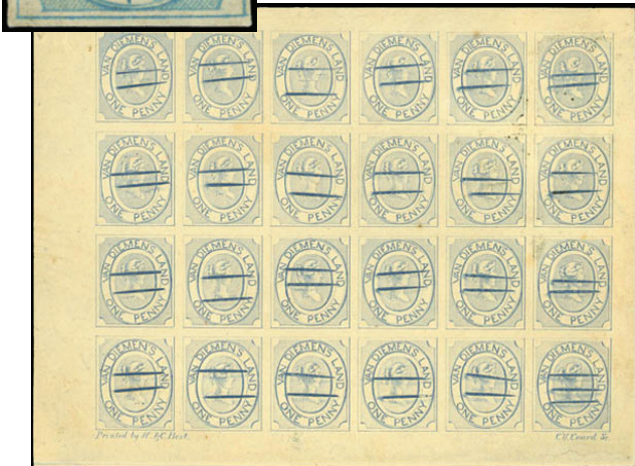
Continuing our 'tour' of the Grahway Australian States Collection, we come to Victoria, and the 1850 Queen Victoria ("Half Length") Ham printing 2nd Die State 1d red brown (Sc. 1 var.), lightly canceled with small thins, estimate \$150-200, unsold; and an 1854 Queen Victoria ("REGISTERED") 1s rose pink and blue (Sc. F1; \$225) face-free strike of a Melbourne "1" barred numeral cancel, estimate \$150-200, hammer \$224.



In Tasmania, we start with the 1853 "Van Dieman's Land" 1d blue 1st printing (Sc. 1; \$1,350) canceled partial "?8" numeral, estimate \$750-1,000, hammer \$944.



And below is an 1853 "Van Dieman's Land" 1d pale blue reprint proof from a defaced plate (Sc. 1a var.) full sheet of 24 with Best and Coard imprints, estimate \$1,000-1,500, did not sell.



At right is an 1856 Queen Victoria ("Queen on Throne") Perkins, Bacon printing 6d light blue rouletted 5-1/2-6-1/2 (Sc. 30a; \$450), unused without gum, estimate \$300-400, hammer \$236; and at left is an 1884 Queen Victoria "Stamp Statute" 1s blue on blue perf 12 watermarked V over Crown sideways (Sc. AR5a; \$140), estimate \$150-200, hammer \$153.



Jumping back to the right, we view an 1884 QV "Stamp Statute" £5 black & yellow-green overprinted "REPRINT" in red perf 12½ (Sc. AR11bR), estimate \$400-600, hammer \$325



Completing the Victoria section, we view an 1895 Stamp Duty 15s brown (Sc. AR47 var.) watermark V over Crown upright, canceled to order, estimate \$100-150, hammer \$94; and an 1885 Queen Victoria 3d yellow-orange overprinted "STAMP DUTY" (Sc. 155; \$115)



o.g., estimate \$100-150, hammer \$153.



Finally, it is on to Western Australia, where we see at left the 1854 Swan (engraved) 1d black imperf plate proof on wove (Sc. 1 var.) in a vertical pair, ungummed, estimate \$400-600, hammer \$472; and at the right, an 1855 Swan



(lithographed) 1s gray brown imperf Swan watermark (Sc. 5a; \$700), unused without gum, estimate \$500-750, hammer \$295.



'Swinging to the left,' it's the 1861 Swan (engraved) 1s yellow green, clean-cut perf 14 to 16 Swan watermark sideways (Sc. 24; \$875) unused without gum, scissor cut at right, estimate \$250-350, did not sell; and 'Swinging



to the right,' it's the 1902 Queen Victoria 2s bright red on yellow perf 11 V and Crown watermark (Sc. 84d; \$350), o.g., single nibbed perf at top, estimate \$100-150, also going unsold.



And, to complete our Australian States viewing we show a Postal-Fiscal 1881 Internal Revenue 5s Swan Artist's pen and ink drawing of the frame and denomination, in the stamp size, in dark purple on card, 48x98mm, unique piece, quite possibly from the De la Rue archives, Barefoot #26E, estimate \$300-400, hammer \$295; and the Postal-Fiscal 1881 Internal Revenue 5s Swan stamp, watermarked CA over Crown, Barefoot #26, o.g. with a light crease,



estimate \$300-400, hammer \$177.